



Difluoromethane. CH₂F₂, Halocarbon-32, Methylene fluoride

Product information Difluoromethane is used in plasma etching of silicon layers.

Characteristics Flammable. Liquefied gas. Gas density is heavier than air.

Physical data	Molecular weight	[g/mol]	52.02		
	Boiling point	at 1.013 bar [° C]	-51.65	at 14.5 psi [° F]	-60.97
Density	at 1.013 bar, 15° C [kg/m ³]	2.18	at 1 atm., 70° F [lb/ft ³]	0.136	
Vapor pressure	at 0° C [bar]	8.1	at 32° F [psi]	117.5	
	at 20° C [bar]	14.7	at 70° F [psi]	219.8	
Flammability range in air (% volume)		14.0 - 33.0			

Product specification	Purity grade	Typical purity	Typical impurities [ppm]				
			N ₂	O ₂	CO ₂	Other Halocarbons	H ₂ O
5.0N	≥99.999 %	≤5	≤1	≤0.5	≤3	≤0.5	≤0.5

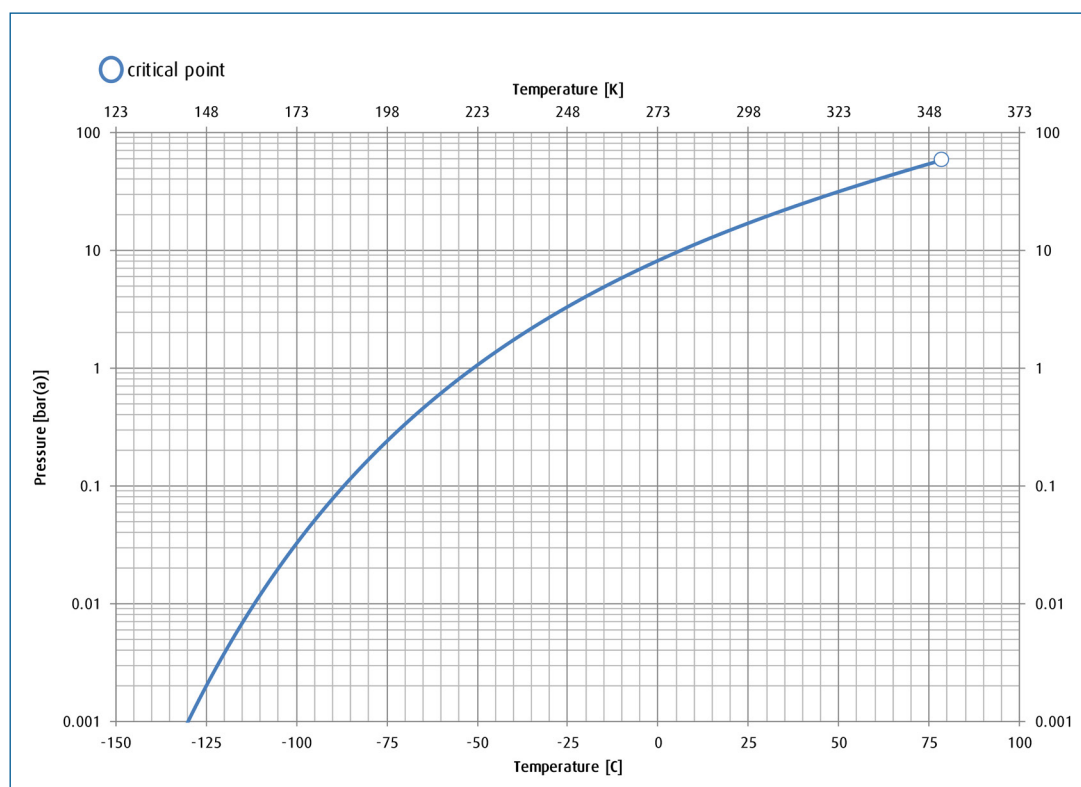
Contact our team for higher grade or different specification products.

Shipping information	UN number	CAS number	EC number	DOT label	Hazard labels required
	3252	75-10-5	200-839-4	Flammable gas	ADR Class 2, 2F DOT Class 2.1

Packaging information

	Package options	Cylinder designation	Cylinder internal volume	Cylinder material	Cylinder diameter	Cylinder height to valve outlet	Cylinder tare weight	Fill contents	Pressure (psig) @ 70° F	Valve outlet	Valve material
US	Cylinder	209	44 L	Steel	9 in	52 in	130 lb	30 kg	215	CGA 350 / CGA 724	SS
	Cylinder	152	29.5L	Aluminum	8 in	49.5 in	49.5 lb	18 kg	215	CGA 350 / CGA 724	SS
	Cylinder	30	8L	Steel	6.75 in	19.75 in	28 lb	7 kg	215	CGA 724	SS
EU	Package options available upon request										
China	Package options available upon request										

Vapor pressure curve



Additional information

The information, recommendations, and data contained in this publication are intended to give basic guidance for safe handling and use of gases. For more information, please refer to Safety Data Sheets. You can locate these through the [Linde Safety Data Sheet Search](#). It is essential for the safe use of gases that personnel are properly trained and are fully aware of the possible hazards. Further information and advice on any matter relating to the safe handling or use of these products may be obtained from the nearest Linde office.

Please visit www.linde.com/electronics for Linde Electronics sales offices information.